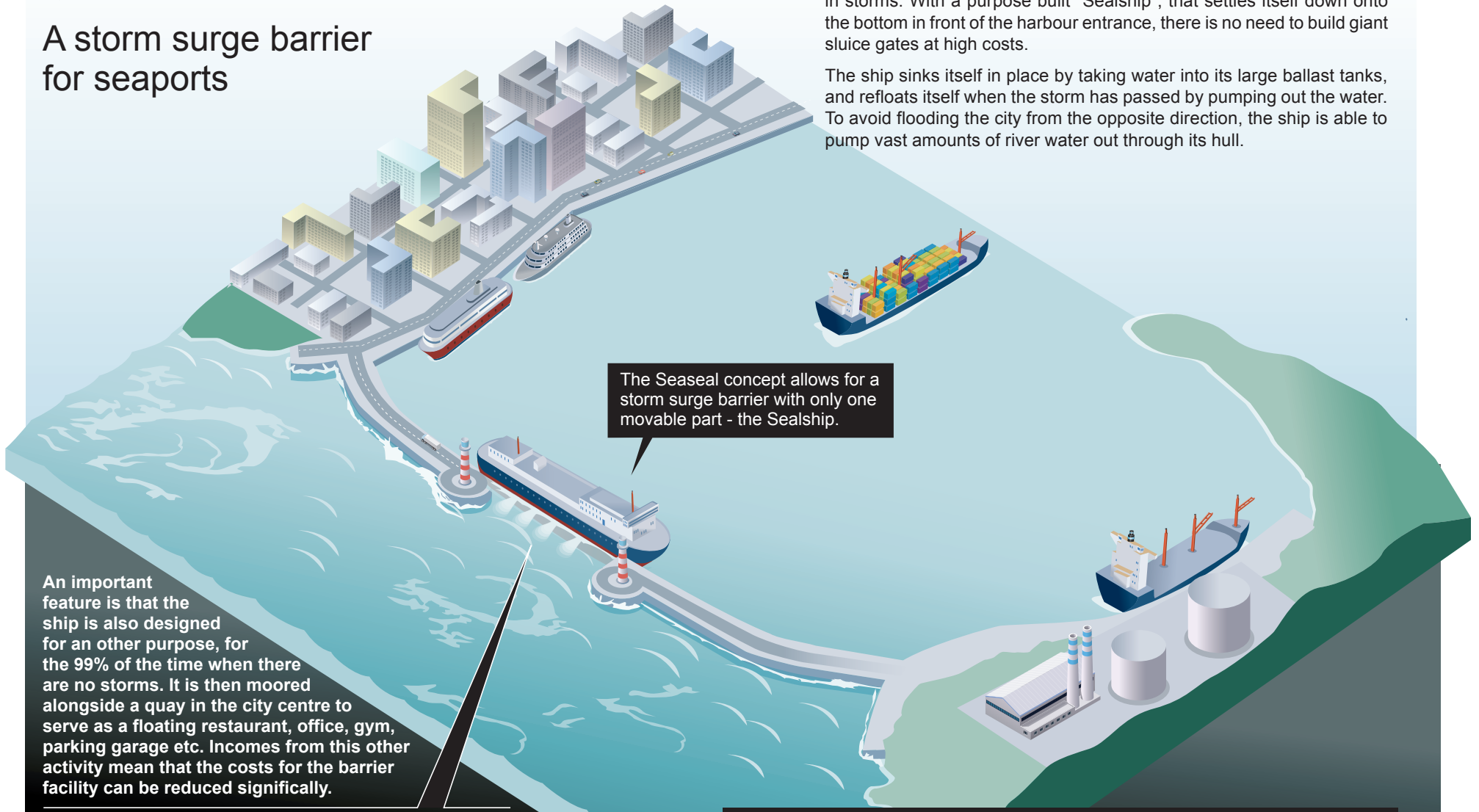


Seaseal

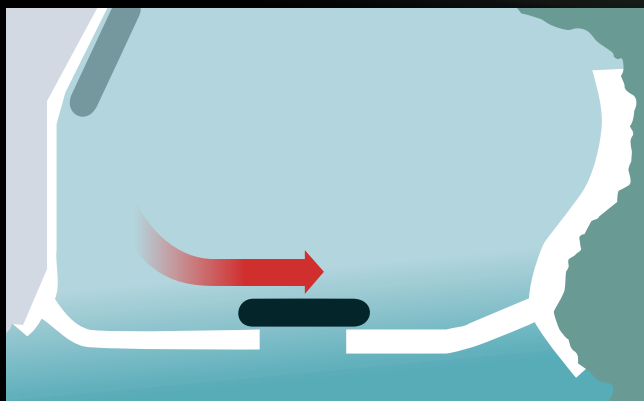
A storm surge barrier for seaports

Seaseal is a project to protect the world's port cities from getting flooded in storms. With a purpose built "Sealship", that settles itself down onto the bottom in front of the harbour entrance, there is no need to build giant sluice gates at high costs.

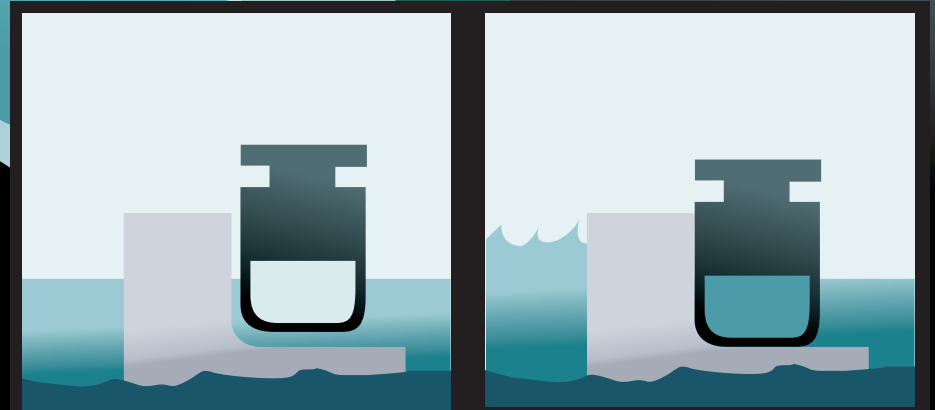
The ship sinks itself in place by taking water into its large ballast tanks, and refloats itself when the storm has passed by pumping out the water. To avoid flooding the city from the opposite direction, the ship is able to pump vast amounts of river water out through its hull.



An important feature is that the ship is also designed for another purpose, for the 99% of the time when there are no storms. It is then moored alongside a quay in the city centre to serve as a floating restaurant, office, gym, parking garage etc. Incomes from this other activity mean that the costs for the barrier facility can be reduced significantly.



When a storm approaches the Sealship heads for the harbour entrance and positions itself in front of it.



By filling large ballast tanks it settles itself down onto a "sill" that has been built on the seafloor across the harbor entrance